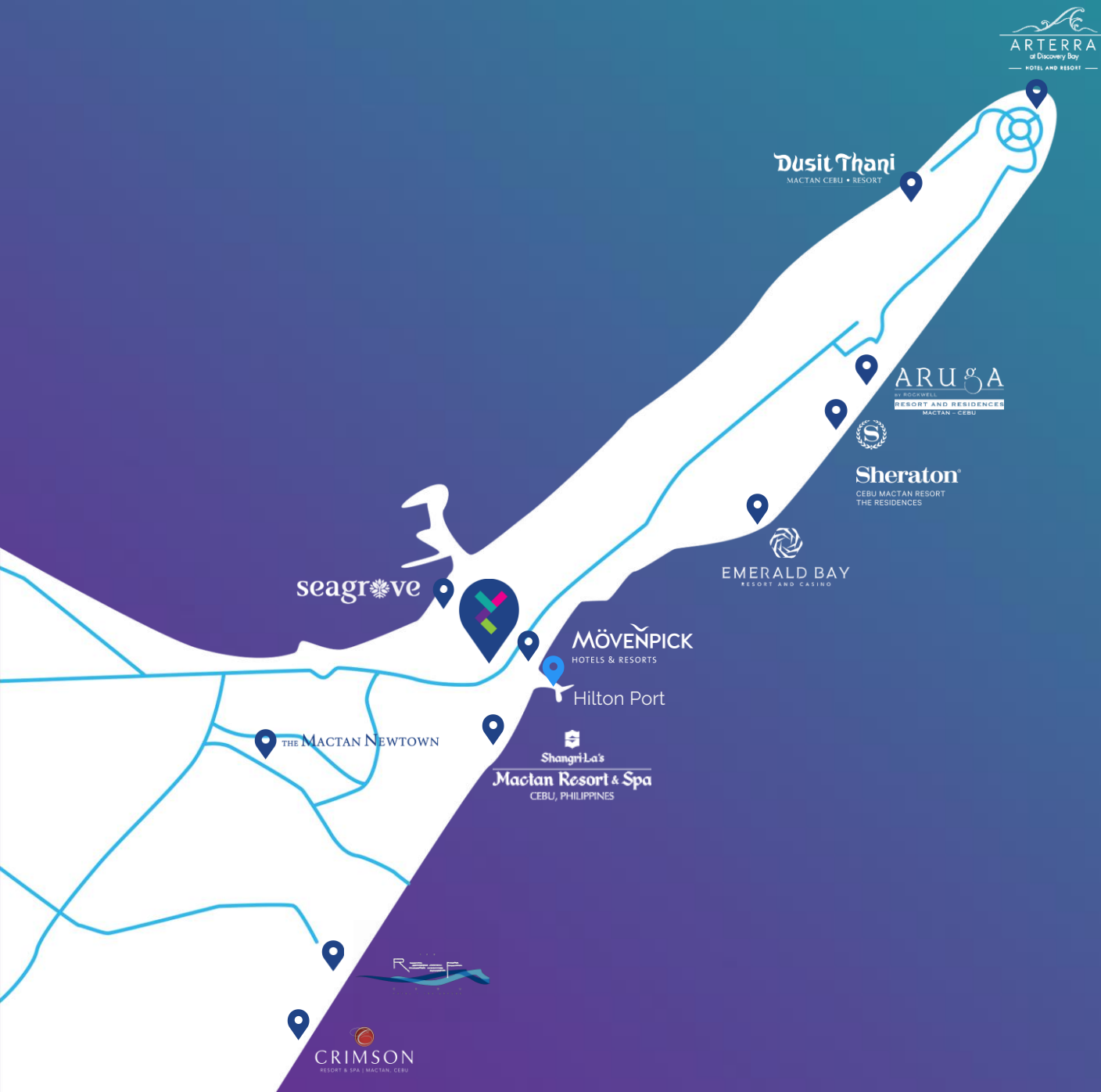




Vertex
coast
at Punta Engaño



*Ride the Wave
of Potential Returns*



Location

Minutes away from resorts, commercial establishments and the Mactan-Cebu International Airport, Vertex Coast sits in an easily accessible and highly coveted location in Mactan.

360
LIVING
HOMES • OFFICES • SHOPS



TOWER 1

TOWER 2

100+ units



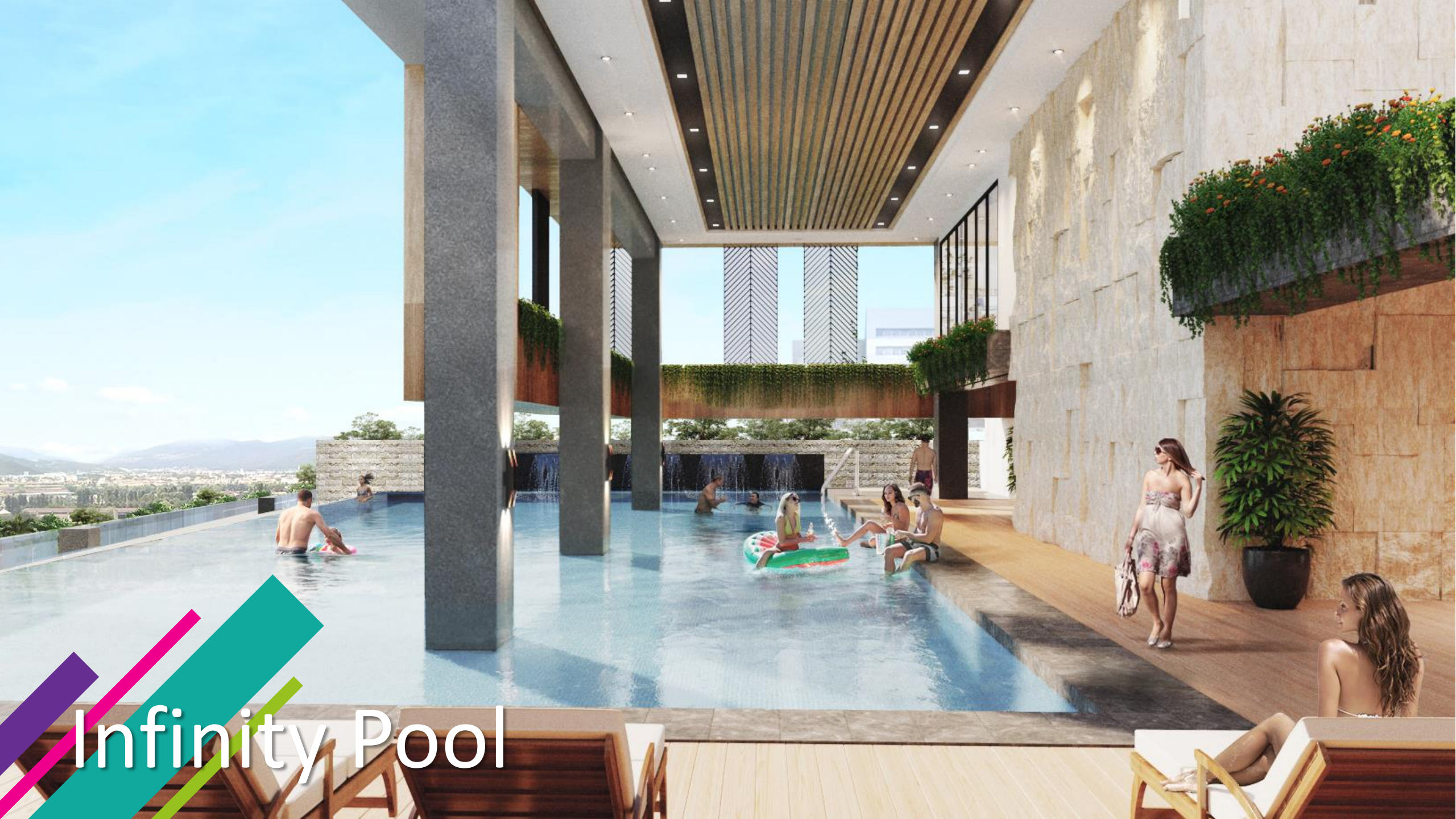
Vertex
CLAY

Features and Amenities





obby



Infinity Pool



den Deck



Gym



Function Room



Commercial Spaces



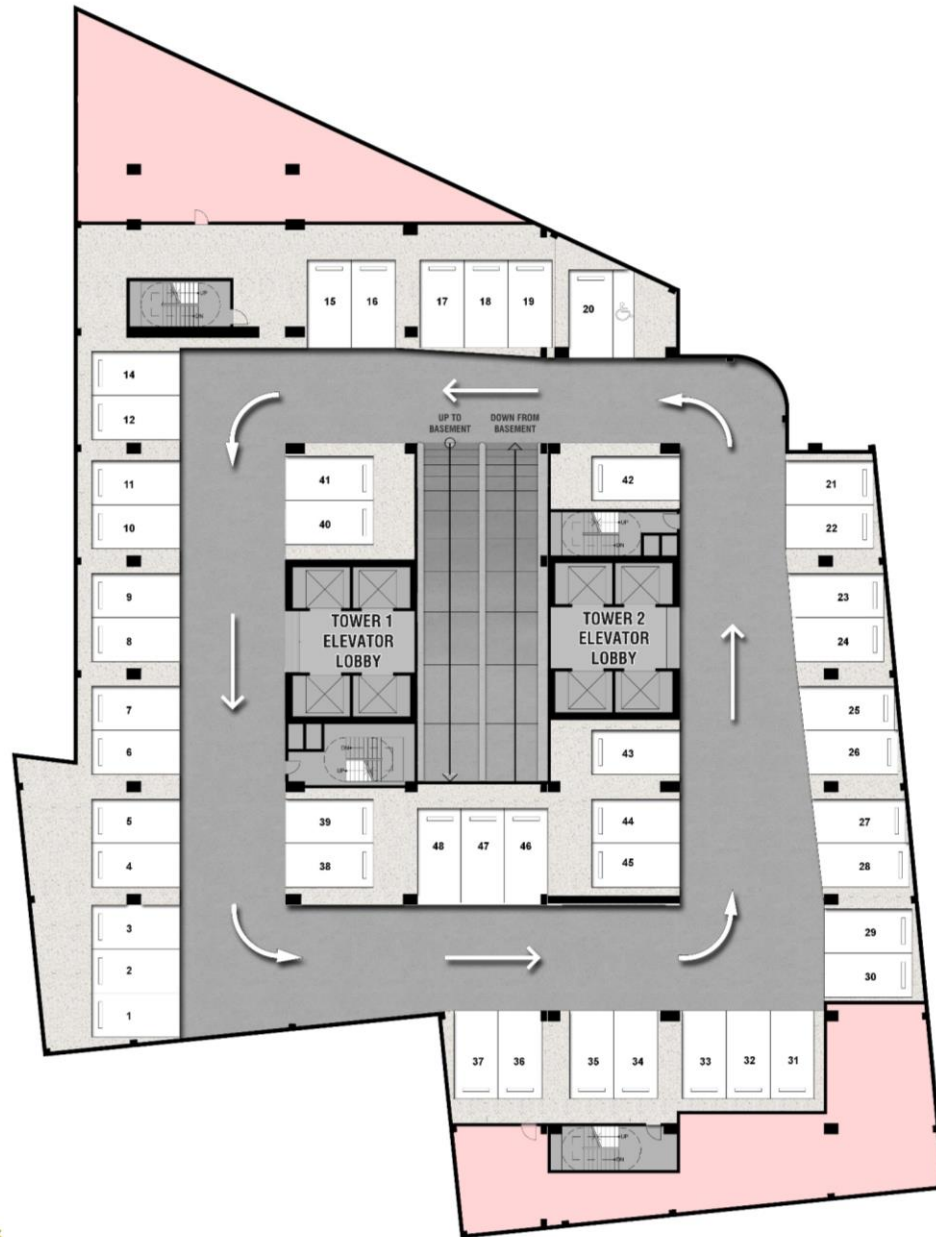
Game Room



Building Floor Plans

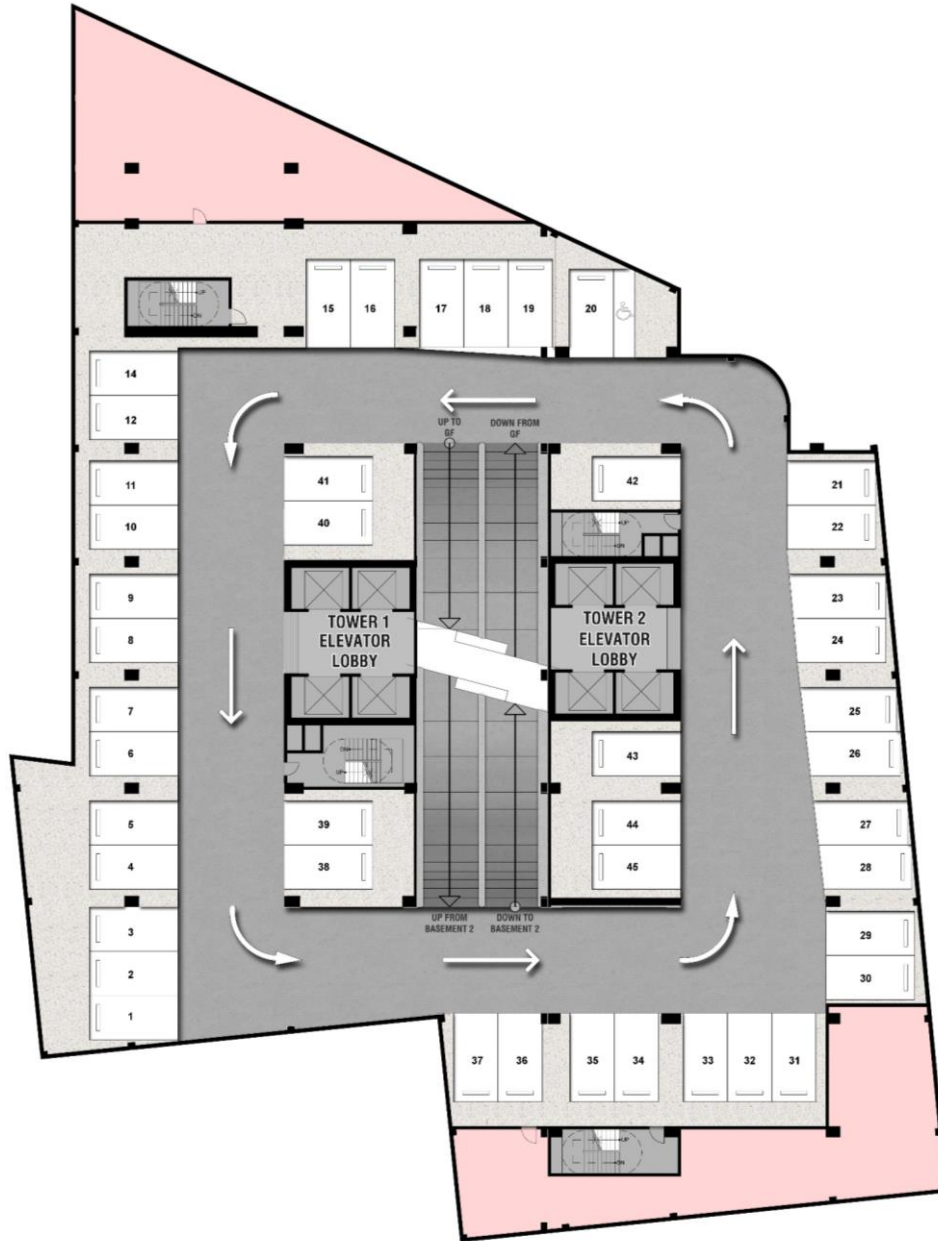
Basement 2

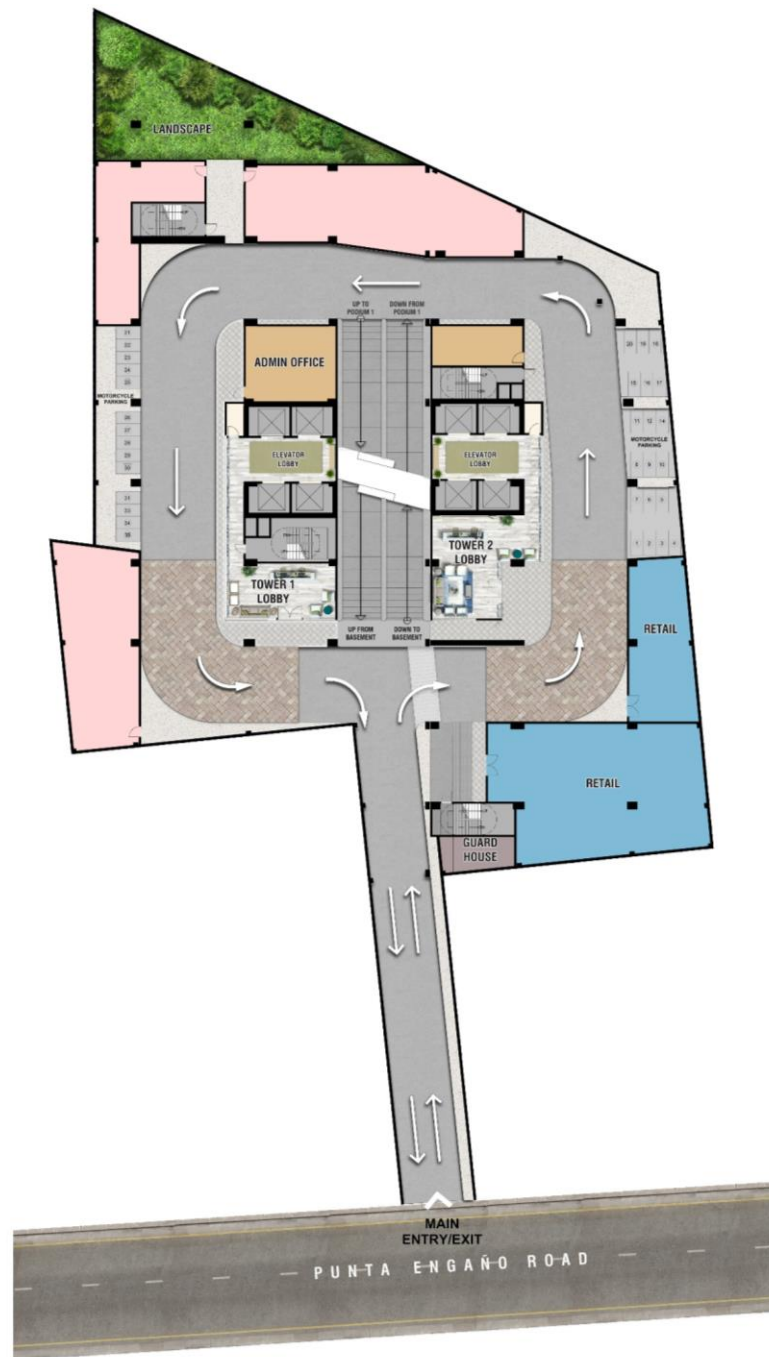
Parking Area



Basement 1

Parking Area





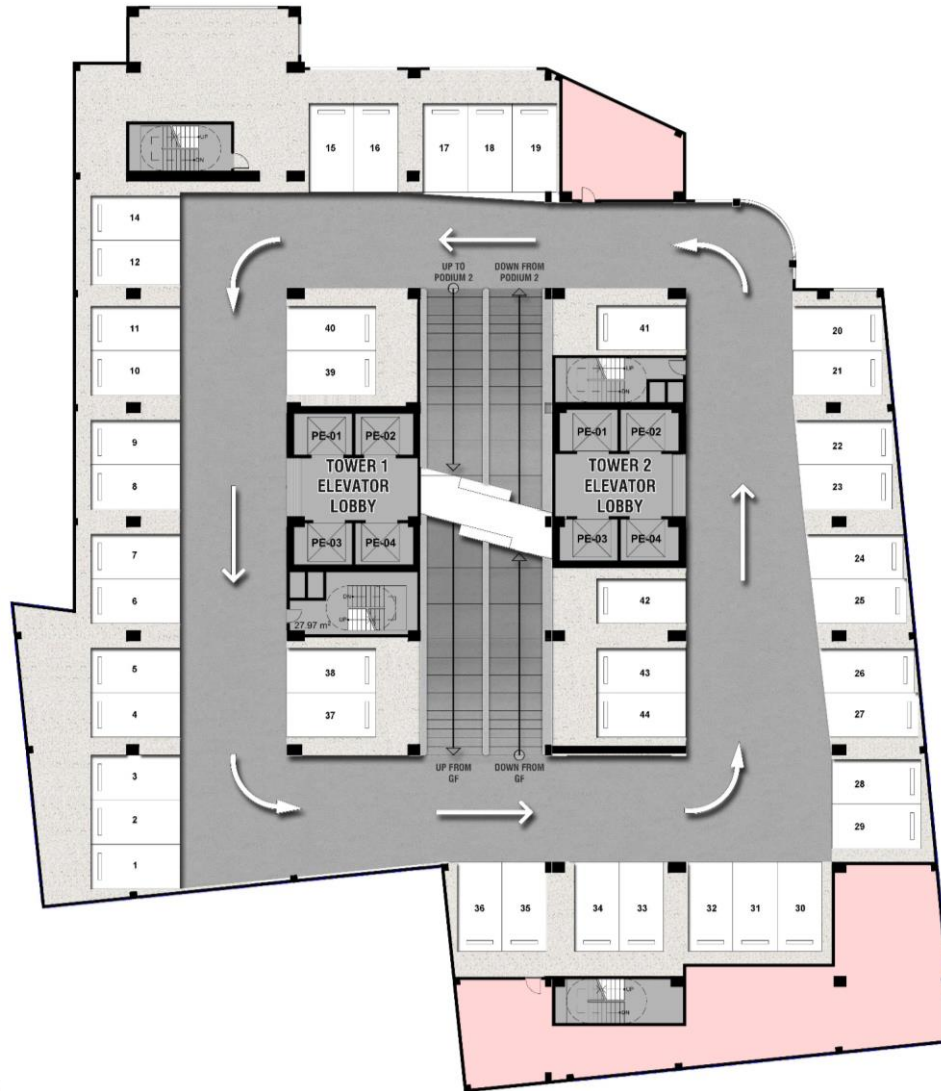
Ground Floor

Lobby, Commercial Spaces,
& Parking Area



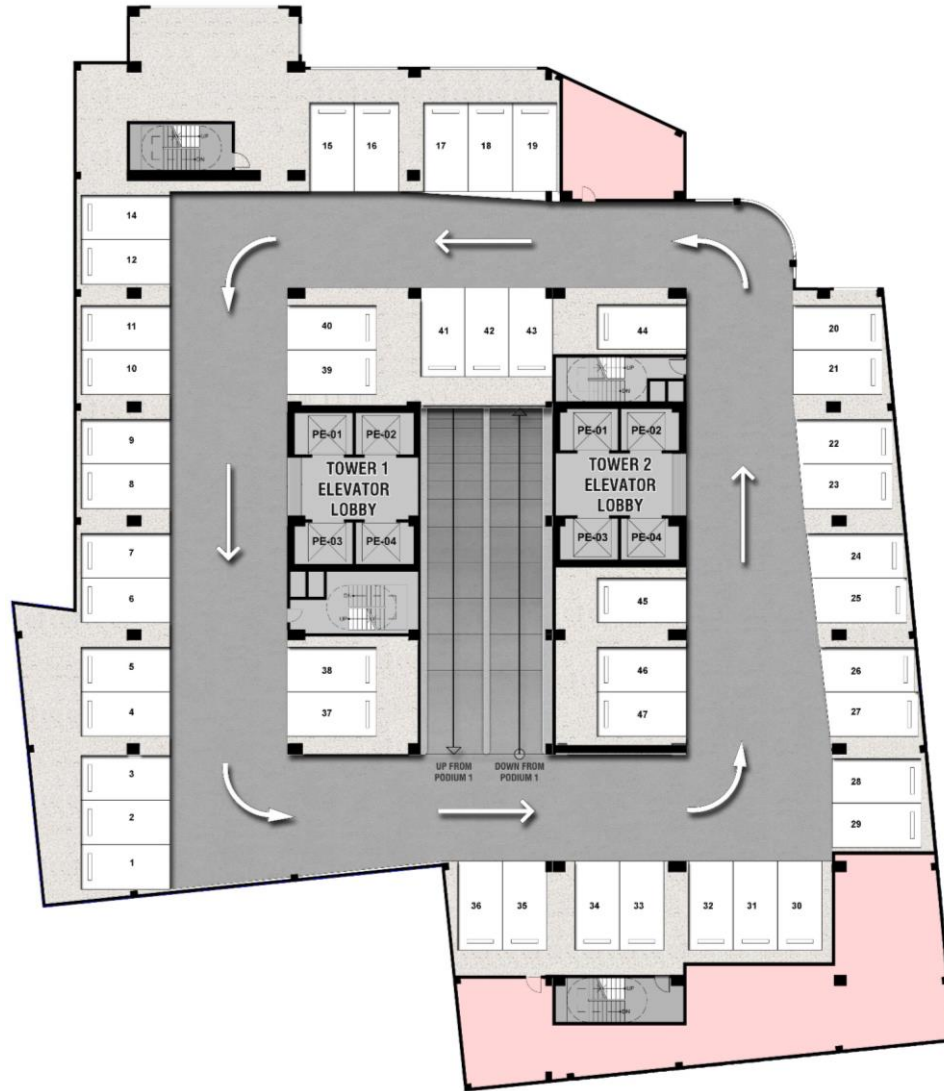
Podium 1

Parking Area



Podium 2

Parking Area



5th Floor

Amenity Floor &
Residential Units



STUDIO UNIT

Studio A = 24.00 sq. m.

1-BEDROOM UNIT

1-BR = 45.40 – 47.25 sq. m.

2-BEDROOM UNIT

2-BR A = 63.35 – 69.30 sq. m.



6th Floor

Amenity Floor &
Residential Units



STUDIO UNIT

Studio A = 24.00 sq. m.
Studio B = 23.00 – 24.75 sq. m.
Studio C = 26.15 sq. m.
Studio D = 25.80 – 27.00 sq. m.
Studio E = 21.80 – 26.55 sq. m.
Studio F = 22.60 – 27.80 sq. m.
Studio G = 23.15 sq. m.
Studio H = 27.70 sq. m.

1-BEDROOM UNIT

1-BR C = 45.80 sq. m.

2-BEDROOM UNIT

2-BR A = 57.65 sq. m.





7th — 9th Floor

Small Office/
Home Office Units

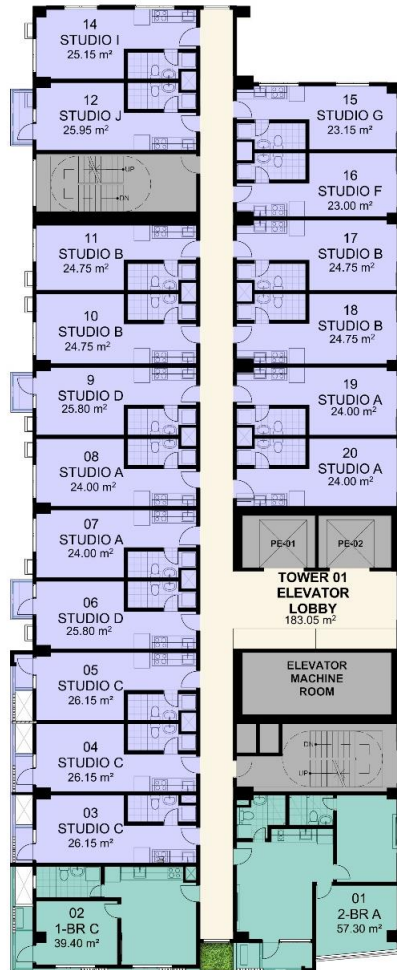
STUDIO UNITS

Studio A = 24.00 sq. m.
 Studio B = 23.00 – 24.75 sq. m.
 Studio C = 26.15 sq. m.
 Studio D = 25.80 – 27.00 sq. m.
 Studio E = 21.80 – 26.55 sq. m.
 Studio F = 22.60 – 27.80 sq. m.
 Studio G = 23.15 sq. m.
 Studio H = 27.70 sq. m.

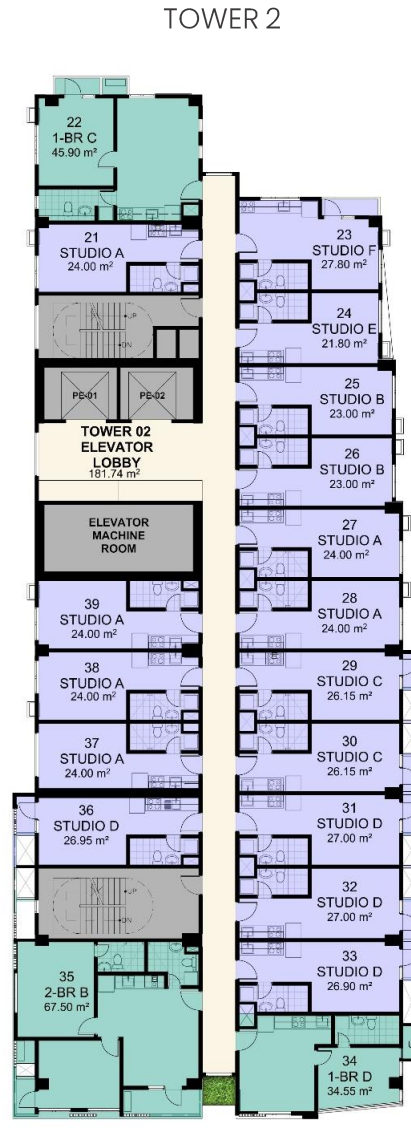
1-BEDROOM UNITS

1-BR A = 60.65 – 61.00 sq. m.
 1-BR B = 57.30 – 57.75 sq. m.
 1-BR C = 45.90 sq. m.





TOWER 1



TOWER 2

10th Floor

Residential Units

STUDIO UNITS

Studio A = 24.00 sq. m.
 Studio B = 23.00 – 24.75 sq. m.
 Studio C = 26.15 sq. m.
 Studio D = 25.80 – 27.00 sq. m.
 Studio E = 21.80 sq. m.
 Studio F = 23.00 – 27.80 sq. m.
 Studio G = 23.15 sq. m.
 Studio I = 25.15 sq. m.
 Studio J = 25.95 sq. m.

1-BEDROOM UNITS

1-BR C = 39.40 – 45.90 sq. m.
 1-BR D = 34.55 sq. m.

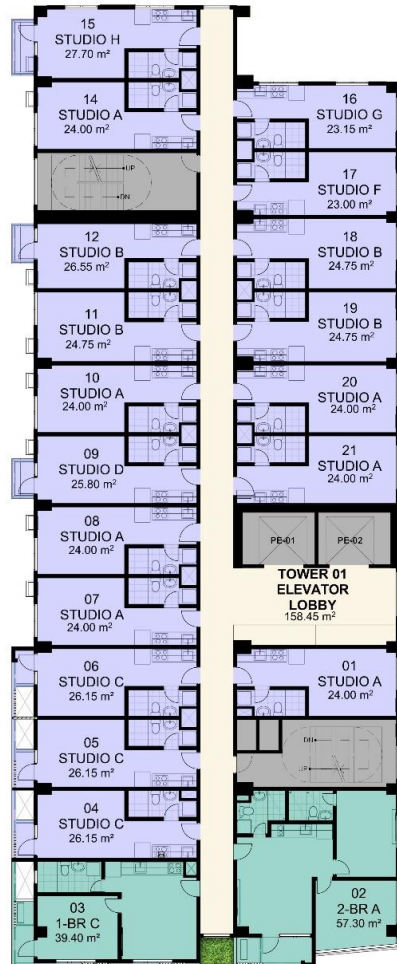
2-BEDROOMS UNITS

2-BR A = 57.30 sq. m.
 2-BR B = 67.50 sq. m.

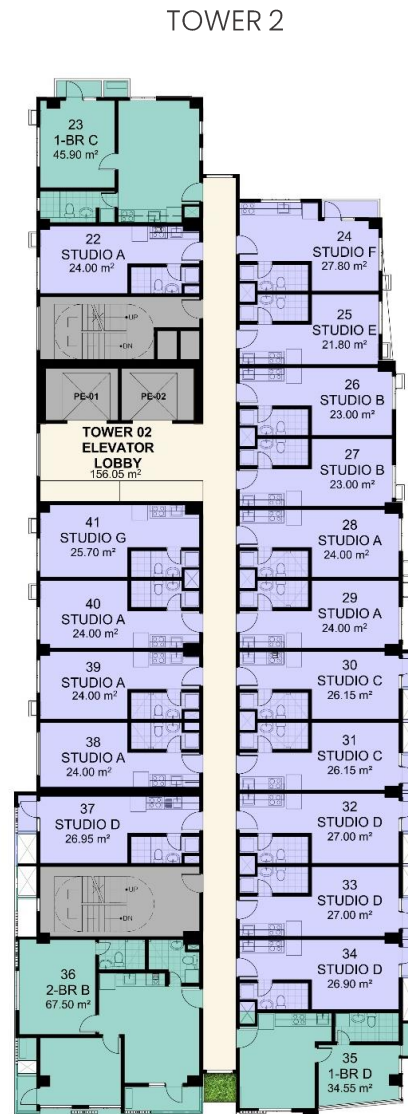


11th – 26th Floor

Residential Units



TOWER 1



TOWER 2

STUDIO UNITS

Studio A = 24.00 sq. m.
 Studio B = 23.00 – 26.55 sq. m.
 Studio C = 26.15 sq. m.
 Studio D = 25.80 – 27.00 sq. m.
 Studio E = 21.80 sq. m.
 Studio F = 23.00 – 27.80 sq. m.
 Studio G = 23.15 – 25.70 sq. m.
 Studio H = 27.70 sq. m.

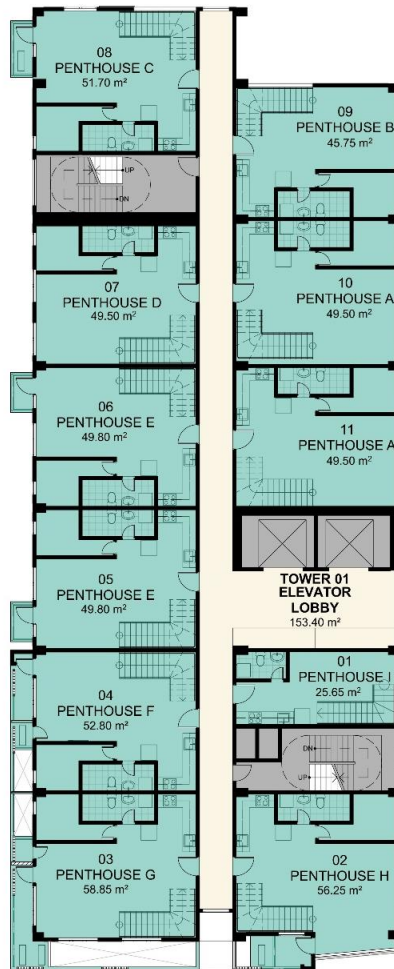
1-BEDROOM UNITS

1-BR C = 39.40 – 45.90 sq. m.
 1-BR D = 34.55 sq. m.

2-BEDROOMS UNITS

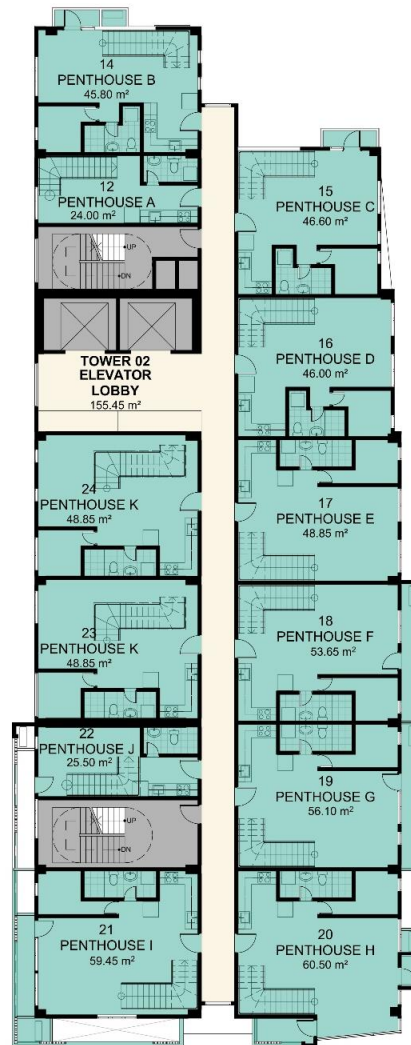
2-BR A = 57.30 sq. m.
 2-BR B = 67.50 sq. m.





TOWER 1

TOWER 2



27th Floor

Residential Units – Penthouse Level

PENTHOUSE UNITS

Penthouse A = 24.00 – 49.50 sq. m.
 Penthouse B = 45.75 – 45.80 sq. m.
 Penthouse C = 46.60 – 51.70 sq. m.
 Penthouse D = 46.00 – 49.50sq. m.
 Penthouse E = 48.85 – 49.80 sq. m.
 Penthouse F = 52.80 – 53.65 sq. m.
 Penthouse G = 56.10 – 58.85 sq. m.
 Penthouse H = 56.95 – 60.50 sq. m.
 Penthouse I = 25.65 – 59.45 sq. m.
 Penthouse J = 25.50 sq. m.
 Penthouse K = 48.85 sq. m



Our Units



Office/Home Office Units

STUDIO UNIT





STUDIO HOME OFFICE TOWER 1 & 2

26.15 sq. m.
7th – 9th Floor

Office Room
Kitchen Area
T&B
Balcony

14.00 sq. m.
5.70 sq. m.
4.30 sq. m.
2.15 sq. m.



Office/Home Office Units

T-BEDROOM UNIT





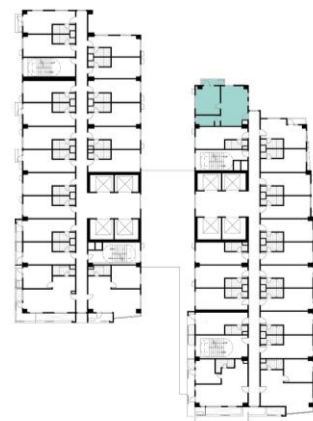
1-BR HOME OFFICE TOWER 1 & 2

45.90 sq. m.

7th – 9th Floor

Office Room
Working Station
Kitchen Area
Pantry
T&B
Balcony
Utility Area

14.95 sq. m.
11.7 sq. m.
5.15 sq. m.
5.50 sq. m.
5.65 sq. m.
1.85 sq. m.
1.10 sq. m.





Studio Residential Unit



STUDIO RESIDENCE TOWER 1 & 2

24.00 sq. m.

5th, 6th, 10th – 26th Floor

Bed Area	10.90 sq. m.
Dining Area	3.10 sq. m.
Kitchen	5.60 sq. m.
T&B	4.30 sq. m.





STUDIO RESIDENCE W/BALCONY TOWER 1 & 2

26.15 sq. m.

5th, 6th, 10th – 26th Floor

Bed Area	10.90 sq. m.
Dining Area	3.10 sq. m.
Kitchen	5.70 sq. m.
T&B	4.30 sq. m.
Balcony	2.15 sq. m.



1-bedroom Residential Unit



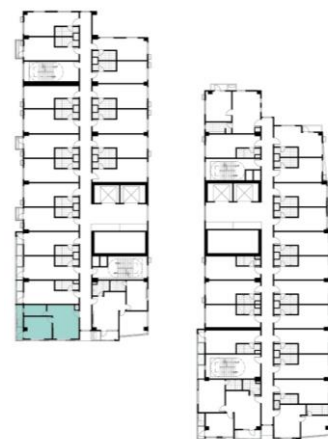


1-BR RESIDENCE C TOWER 1

39.40 sq. m.

10th – 26th Floor

Bedroom Area	12.65 sq. m.
Dining Area	5.15 sq. m.
Kitchen Area	6.75 sq. m.
Living Area	6.30 sq. m.
T&B	5.20 sq. m.
Balcony	1.60 sq. m.
Utility Area	1.75 sq. m.





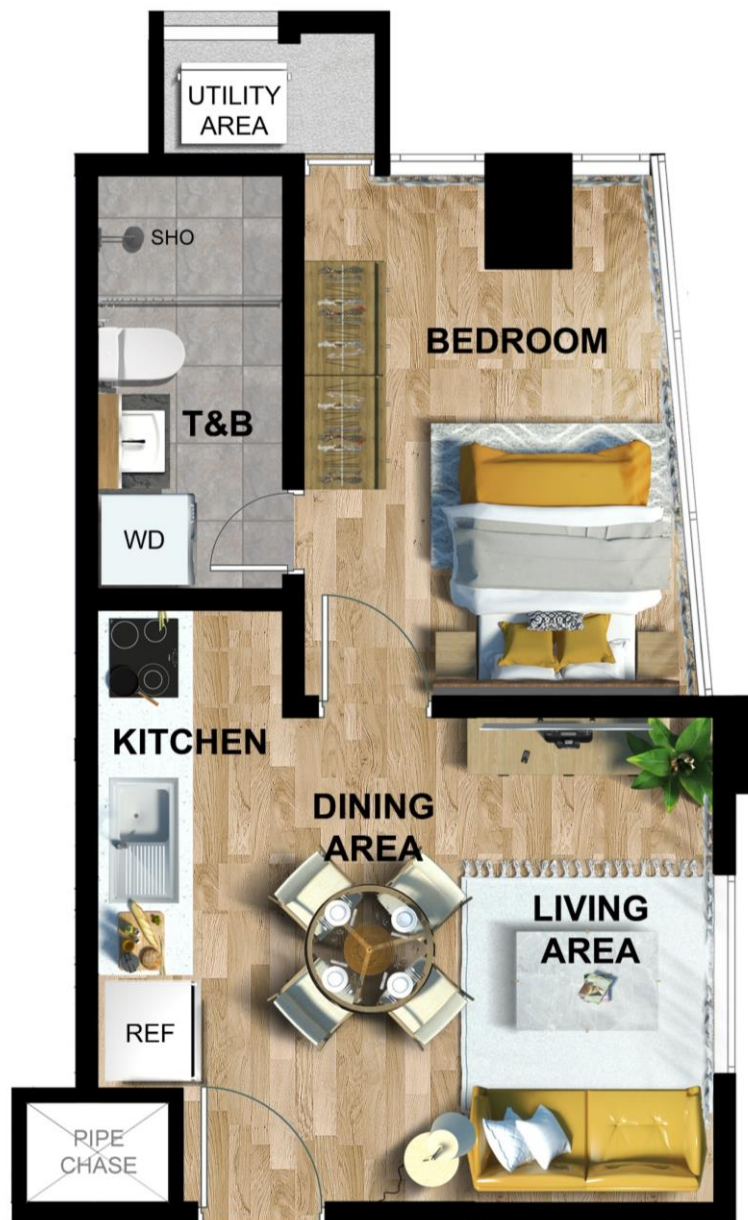
1-BR RESIDENCE C TOWER 2

45.90 sq. m.

6th, 10th – 26th Floor

Bedroom Area	14.95 sq. m.
Dining Area	5.20 sq. m.
Kitchen Area	5.15 sq. m.
Living Area	12.00 sq. m.
T&B	5.65 sq. m.
Balcony	1.85 sq. m.
Utility Area	1.1 sq. m.

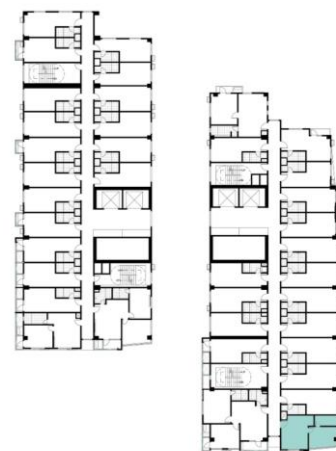




1-BR RESIDENCE D TOWER 2

34.55 sq. m.
10th – 26th Floor

Bedroom Area	10.75 sq. m.
Dining Area	4.45 sq. m.
Kitchen Area	6.00 sq. m.
Living Area	7.60 sq. m.
T&B	4.55 sq. m.
Utility Area	1.20 sq. m.



2-bedroom Residential Unit



2-BR RESIDENCE A TOWER 1

57.30 sq. m.

6th, 10th – 26th Floor



Master Bedroom	11.90 sq. m.
Master's T&B	3.25 sq. m.
Bedroom 2	12.80 sq. m.
T&B	4.60 sq. m.
Dining Area	7.80 sq. m.
Kitchen Area	2.85 sq. m.
Living Area	9.00 sq. m.
Balcony	5.10 sq. m.





2-BR RESIDENCE TOWER 1 & 2

67.20 sq. m.

5th Floor

Master Bedroom	10.25 sq. m.
Master's T&B	3.60 sq. m.
Bedroom 2	6.95 sq. m.
T&B	2.90 sq. m.
Dining Area	6.35 sq. m.
Kitchen Area	8.35 sq. m.
Living Area	9.60 sq. m.
Balcony	19.20 sq. m.

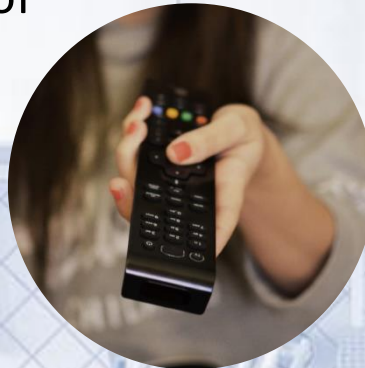


PRILAND Advantage

Where others cut corners, Priland delivers. Fixtures that support ease of connectivity and convenience come standard in every project.

PROVISIONS FOR:

- Airconditioning Unit
- Telephone
- HDTV Cable
- Induction Stove
- Range Hood
- Fire Sprinkler System
- Smoke and Heat Detectors





Common Areas

RESIDENTIAL AREAS

- Reception Area
- 8 Elevators shared by both towers
- Central Garbage Collection Area (MRF)
- Provision for Garbage Collection on Every Floor

AMENITIES

- Tower 1 Lobby at Ground Floor
- Tower 2 Lobby at Ground Floor
- Spacious Lobby at Amenity Floor
- Kiddie Pool
- Infinity Pool
- Gym
- Garden Deck
- Function Room
- Commercial Spaces
- Game Room

PARKING

- Basement 1 & 2
- Podium 1 & 2





Developed by

PRILAND
RESIDENCES

Building Aspirations to Life